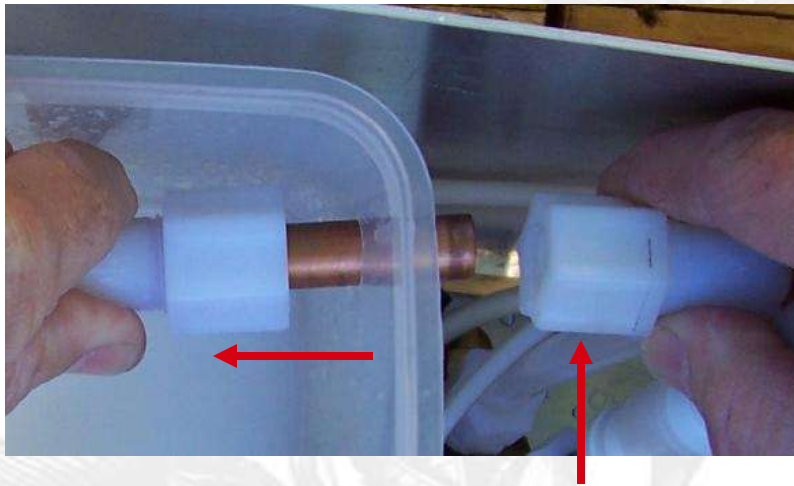


Cleaning your filter, no tools required

Loosen the Jaco nut and pull the suction tube assembly with the filter attached through the mixing tank and out of the machine. The filter easily pulls off of the plastic tube and can be cleaned with water pressure. **When pushing the filter back on the tube, make sure there is a $\frac{1}{2}$ " distance between the end of the tube and the filter screen bottom.** If the tube bottoms out on the screen you will have to clean your filter more often.



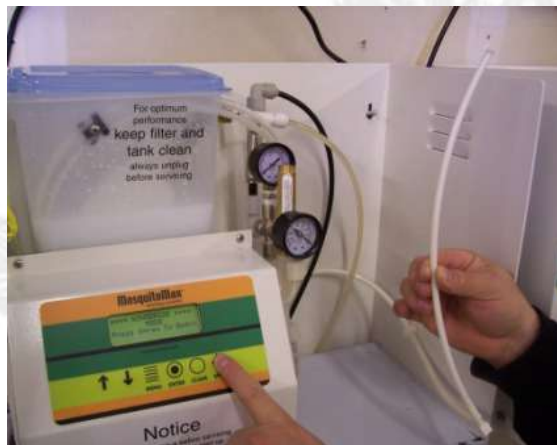
Loosen the hand tight Jaco nut by turning counter clockwise (you don't have to remove the nut completely) until you can pull the suction tube assembly through the mixing tank.

when we move in... they move out.



Pull the filter off the suction tube, clean and push back on. **Note:** see above instructions

Winterizing: Steps 1 and 2



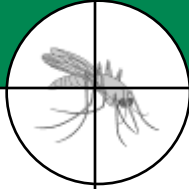
Remove the dip tube from the chemical reservoir and orient where the open end is upright (to keep fluid from dripping out).

Press **Menu** and scroll to menu option 12, “Winterize System”, press **Enter**, then **Spray**, the system will run for 120 seconds clearing the line.

when we move in... they move out.



Winterizing: Steps 3 through 6



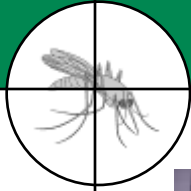
Turn water off at source (hose bib), press **Spray** to continue your winterize cycle. The system will automatically stop and display “Low Water Halted”.

Pour 1 quart of antifreeze into the mixing tank and insert dip tube directly into the mixing tank.



Press **Spray** to continue your winterizing cycle. The system will run for 120 seconds or stop due to low fluid level and display “Water Low Halted”.

Winterizing: Steps 7 through 10

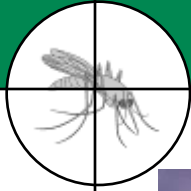


Disconnect water line from both ends and drain line, install caps on open tube ends to keep insects and debris out, insert plug in chemical reservoir, disconnect power and your Finished.

when we move in... they move out.

De-winterize Steps 1 through 4

Plug unit in, press menu, scroll to option 12
“Winterize System”, press enter



Pour 1 quart vinegar directly into mixing tank, remove tube cap from dip tube and insert into mixing tank. Turn on water and flush out any debris in line, remove tube cap from water line, connect to hose bib adapter and turn water on. (save tube caps for re-use). Press **spray**, the system will run for 120 seconds purging your nozzle circuit and dip tube from anti-freeze.

MosquitoMax™
misting systems

when we move in... they move out.

De-Winterize last steps: Remove the chemical dip tube from the mixing tank and orient where the open end is upright



Press the **Spray** button, this will activate a cycle to clear the injection line.

When the cycle ends, insert the dip tube into the chemical reservoir until it hits bottom.

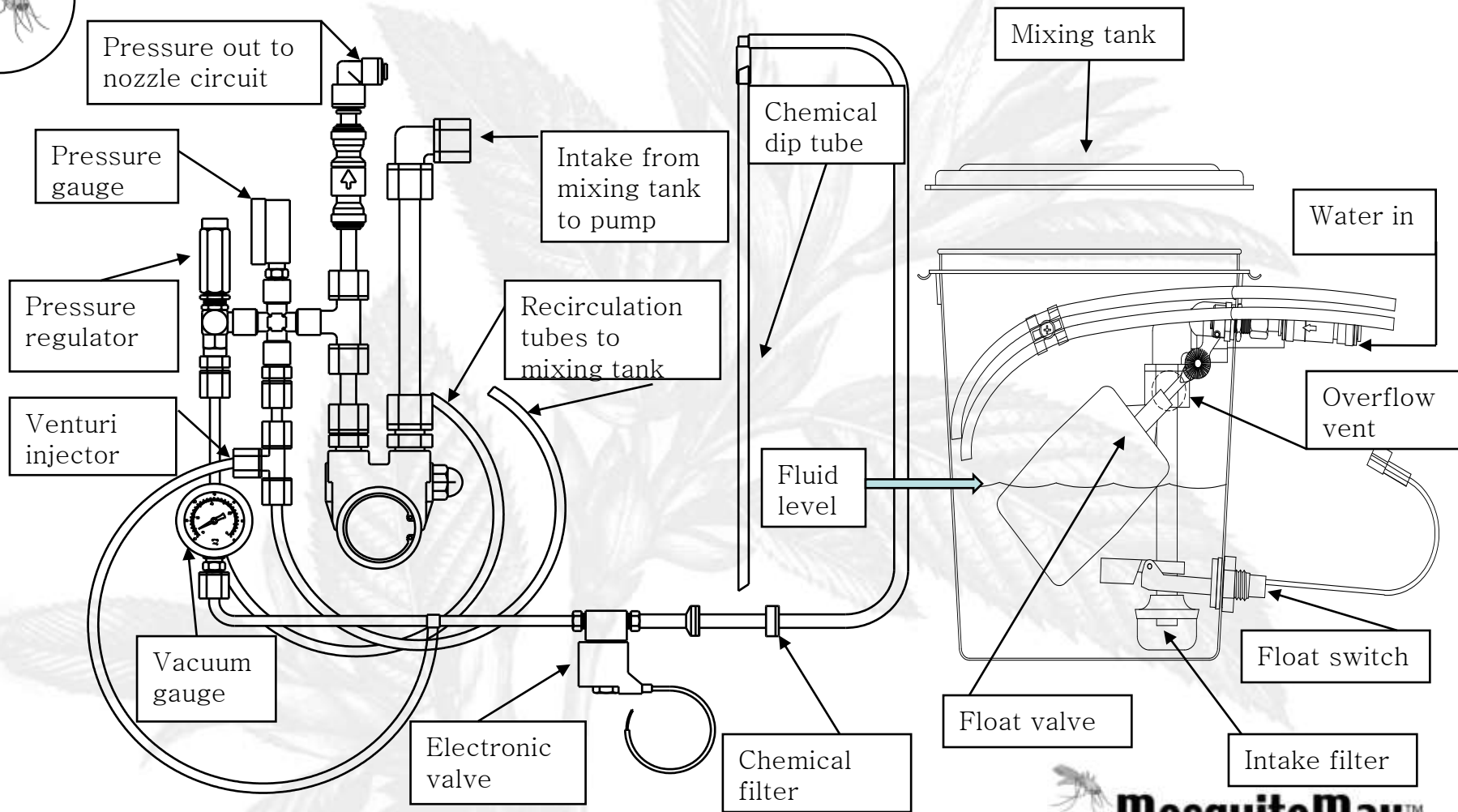
Press **Menu** and the “Run Screen” appears.

All pre-programmed settings from the prior year will remain.

De-winterizing complete!



System schematic



when we move in... they move out.

MosquitoMax provides a one year replacement equipment warranty

- Motor
- Pump
- Tubing
- Machine enclosure
- Timer and electronic assembly
- 1024 nozzles, fittings & clamps
- Customer service: we will be happy to assist you with any installation, operating or support questions. Just call toll free 877-523-2525 Mon-Fri 8-5 central standard time.

We stand behind our products!

when we move in... they move out.

